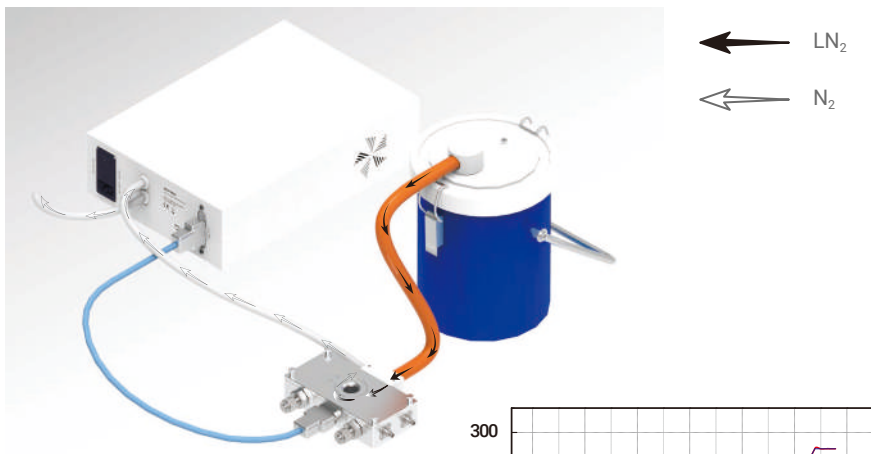


## 6 Versions Depending on Temperature

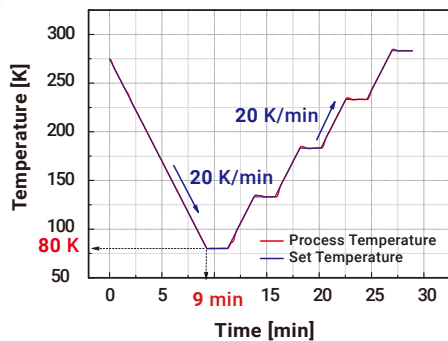
### Liquid Nitrogen Cooling Sample Stage



#### MPS - LN

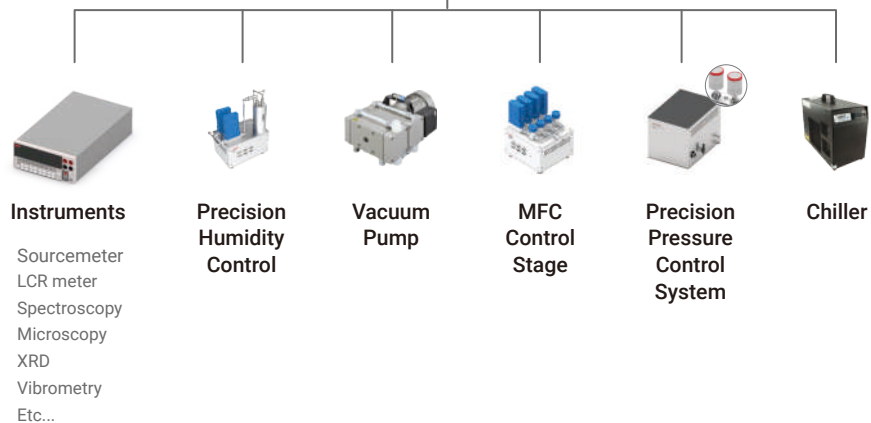
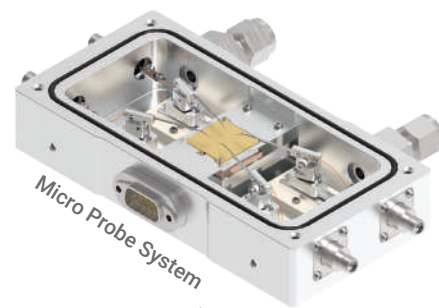
Temp.: 80 K ~ RT  
 Sample stage size: Ø 14 mm  
 Cu sample stage  
 2L LN<sub>2</sub> Dewar (Optional)

video at: <https://bit.ly/3FjcGv8>

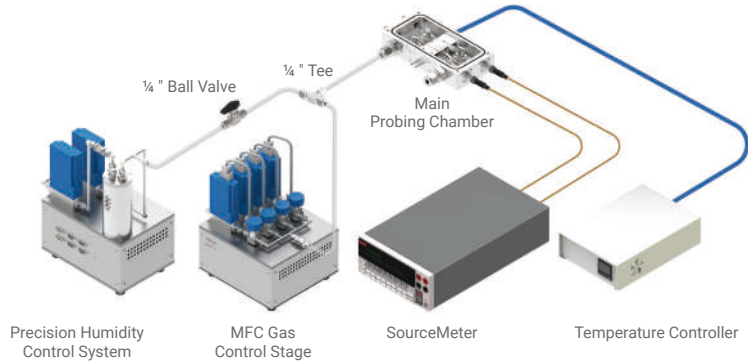


## System Configuration

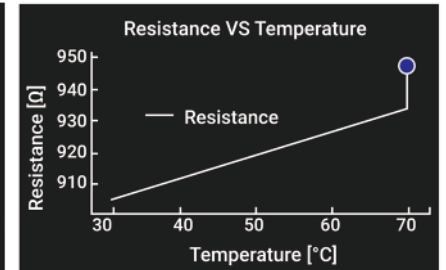
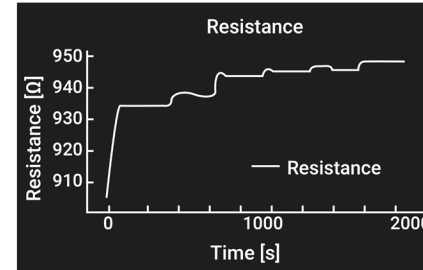
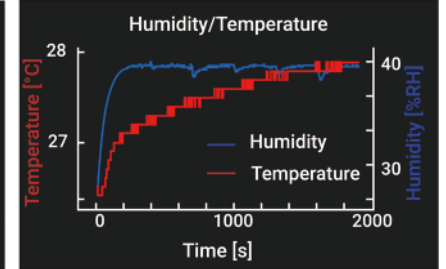
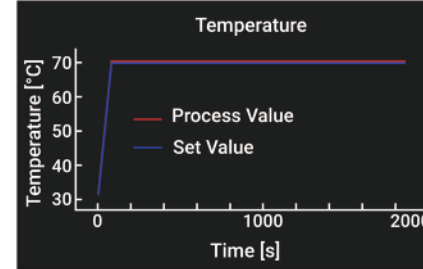
### Peripherals



# System Configuration for Gas Sensor Analysis

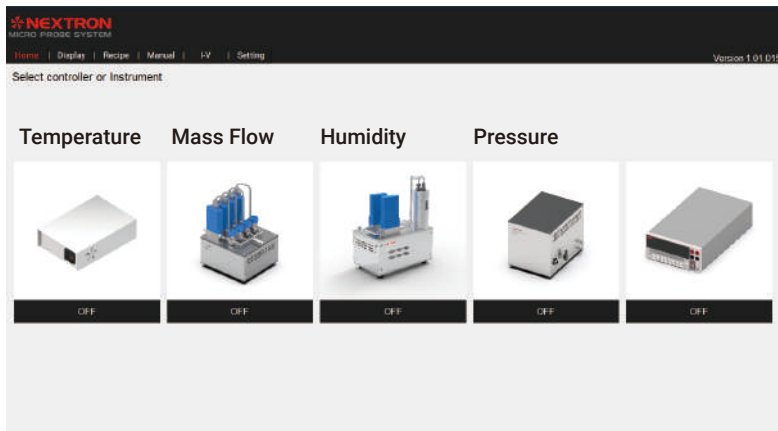


## Gas Sensor Analysis - Software



# Integrated Software

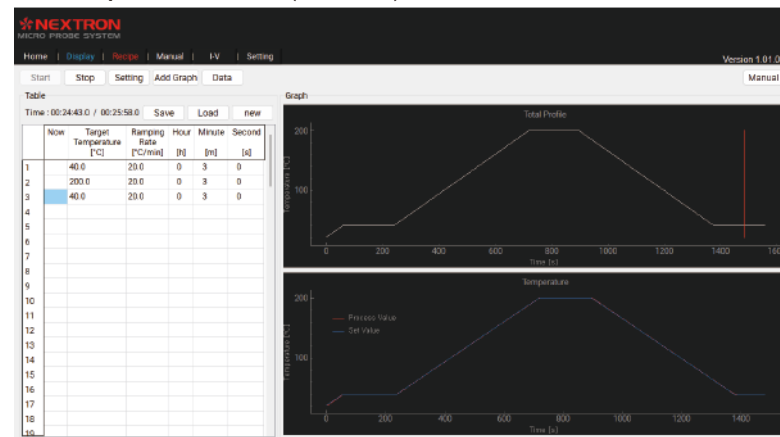
## Software Main Display



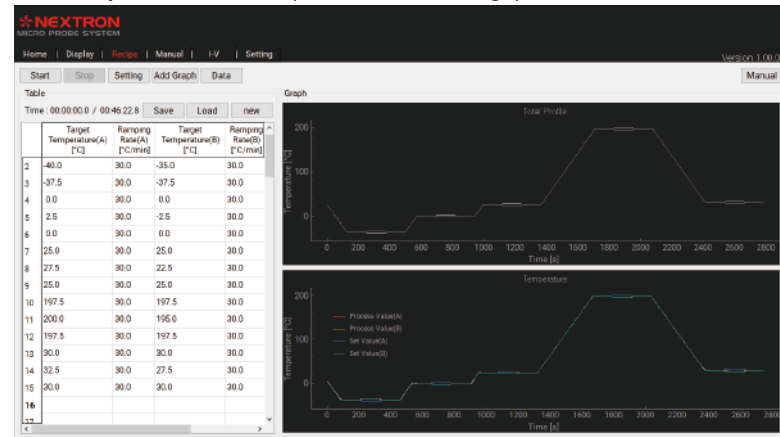
Just set your recipe and make it out!

Nextron's integrated software makes it possible to control Keithley 2400/2450 as well as all environmental control systems at once. Environment control is convenient and easy as it enables Temperature, Humidity, Gas flow, Pressure, and Electric Measurement to be controlled on one software.

## 1-1. Temperature Control (Standard)

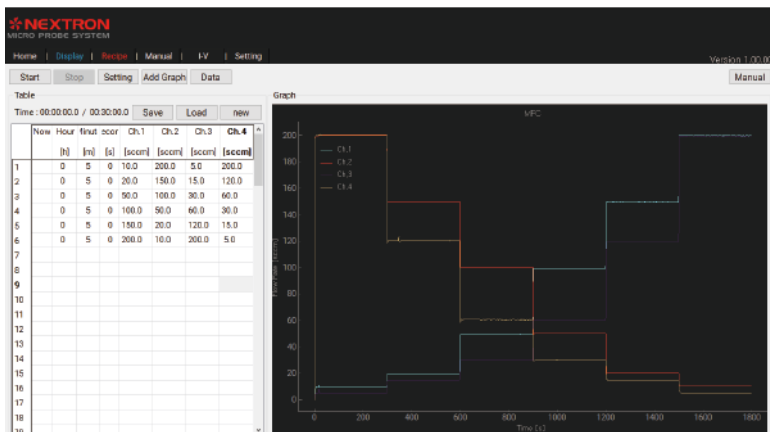


## 1-2. Temperature Control (Double Peltier Stage)

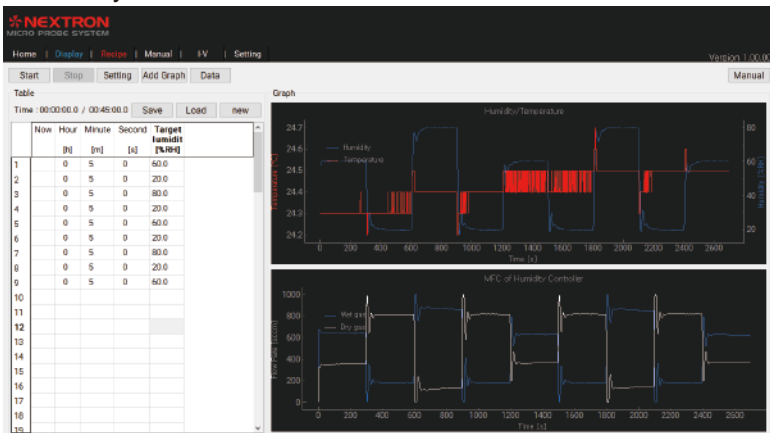


Adjustable is the gap between the two thermal stages from 0mm to 3mm. [More Information: p.29](#)

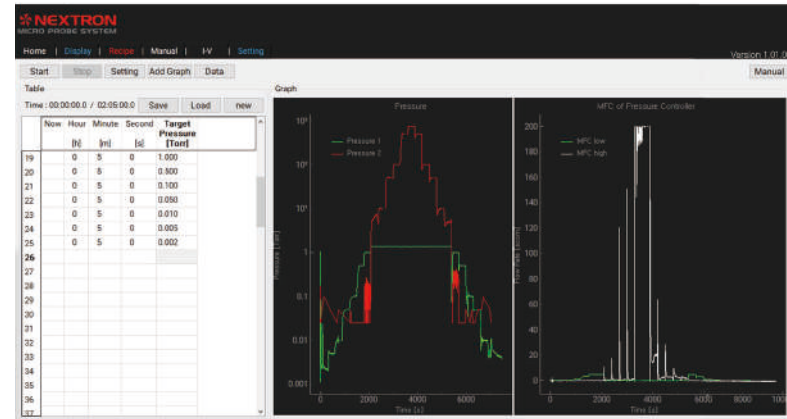
## 2. Mass Flow Control



## 3. Humidity Control



## 4. Pressure Control



## 5. Electric Measurement Compatible with Keithley 2400/2450

